



Application

- To transfer clean water with liquid temperature between 0°C and 40°C
- Applicable in water supply and drainage for factories, mines, municipal facilities as well as field irrigation, etc.

Features

- New unique design with ergonomic feature
- Portable and compact pump frame
- High quality motor with excellent performance and long service life
- Impeller designed with high efficient hydraulic system
- Low fuel consumption

Pump

- Anti-rust cast iron impeller and diffuser
- Max. suction: 8 m/120 s
- Inlet/outlet: 25 mm/38 mm

Engine

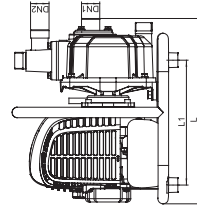
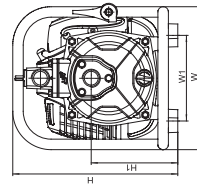
- Single cylinder, 2-stroke, Air-cooled
- Max. power: 1.6 HP
- Displacement: 42.7 cc
- Rated speed: 7500 rpm

Identification Codes



Technical Data

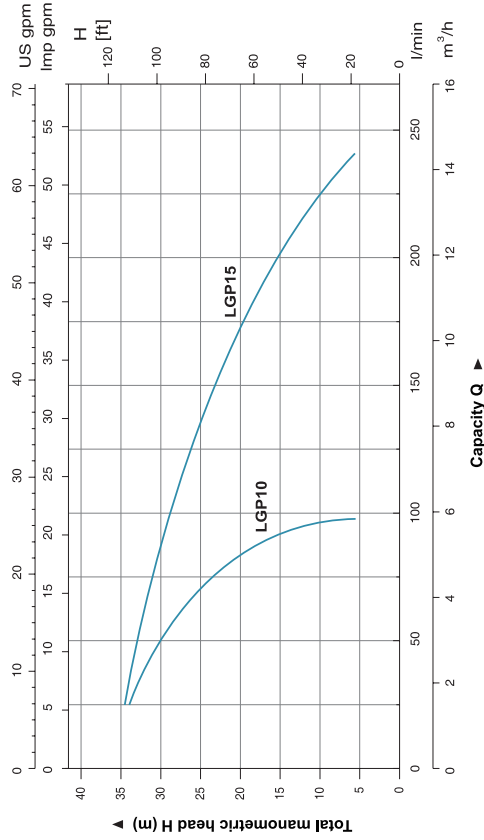
MODEL	POWER HP	Q (m ³ /h)	Q (l/min)	0	2	4	6	8	10	12	14	16
LGP10	1.6			0	33.3	66.7	100	133.3	166.7	200	233.3	266.7
LGP15	1.6			35	34	26	-	-	-	-	-	-
				H (m)	35	34.5	32.5	29	25.5	20.5	12.1	6.5



Dimension

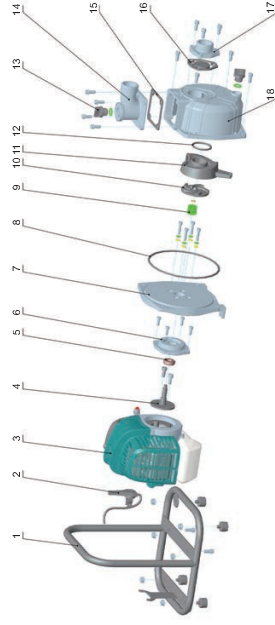
Model	DN1	DN2	L (mm)	W (mm)	H (mm)	L1 (mm)	W1 (mm)	H1 (mm)
LGP10	1"	1"	336	279	300	217.5	155	157
LGP15	1 1/2"	1 1/2"	344	279	345	233	175	144

Hydraulic Performance Curves



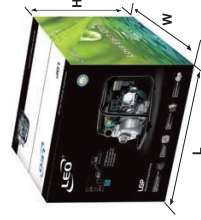
Materials Table

No.	Part	Material
1	Frame	Steel
2	Threaded trigger	
3	Engine	
4	Crankshaft	
5	Bearing	
6	Seal connection	Aluminum
7	Pump cover	Aluminum
8	O-ring	NBR
9	Mechanical seal	Carbon/Ceramic
10	Impeller	HT200
11	Diffuser	HT200
12	O-ring	NBR
13	Plug	PP
14	Outlet	Aluminum
15	Seal	NBR
16	Non-return valve	NBR
17	Inlet	Aluminum
18	Pump body	Aluminum



Package Information

Model	GW (Kgs)	L (mm)	W (mm)	H (mm)	Quantity (PCS/20 TEU)
LGP10	8.1	350	290	325	886
LGP15	8.3	355	290	370	768





Application

- To transfer clean water with liquid temperature between 0°C and 40°C
- Applicable in water supply and drainage for factories, mines, municipal facilities as well as field irrigation, etc.

Features

- Strengthened pump body ensures more durable and reliable service
- Better sealing effect by using special mechanical seal
- 5-direction outlet for convenient use
- Improved starter handle for easier starting
- 20% increased loading quantity thanks to very compact design
- Less gasoline consumption

Pump

- Anti-rust cast iron impeller and diffuser
- High quality forged steel crankshaft
- Max. suction: 8 m/120 s
- Inlet/outlet: 50 mm/80 mm

Engine

- Single cylinder, 4-stroke, Air-cooled
- Max. power: 5.5 HP/6.5 HP
- Displacement: 163 cc/196 cc
- Rated speed: 3600 rpm

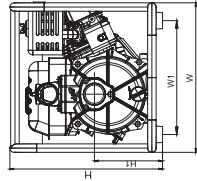
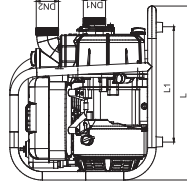
Identification Codes

LGP 20 - A



Technical Data

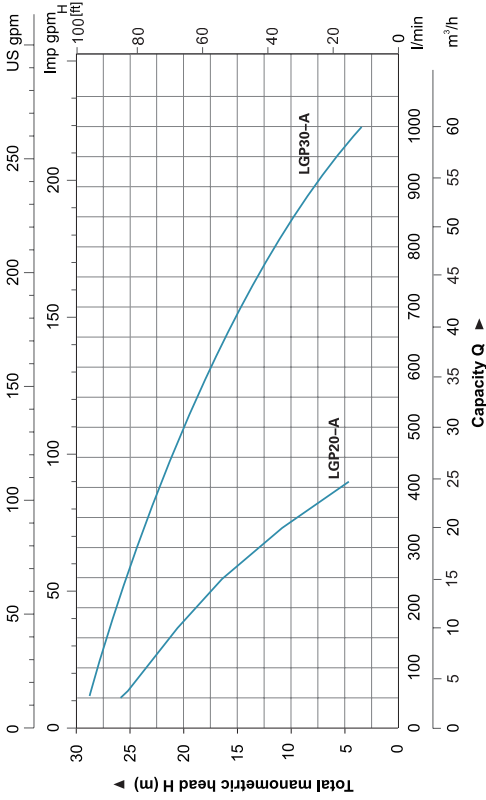
MODEL	POWER HP	Q (m ³ /h)												
		0	5	10	15	20	25	30	35	40	45	50	55	60
LGP20-A	5.5	0	83.3	166.7	250	333.3	416.7	500	583.3	666.7	750	833.3	916.7	1000
		H (m)												
LGP30-A	6.5	30	25.1	21.6	17.6	13.4	9.9	1.5	-	-	-	-	-	-
		30	28.4	27.5	26	24	22.5	20	17.5	15	12.5	8.5	6	3.5



Dimension

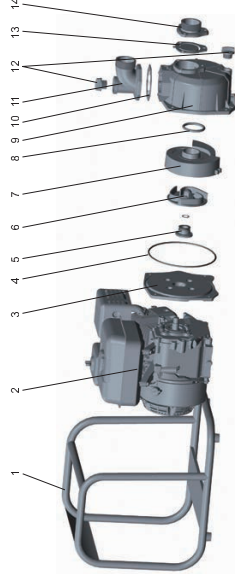
Model	DN1	DN2	L	W	H	L1	W1	H1
LGP20-A	2"	2"	462	397.5	405.5	306.5	302.5	181
LGP30-A	3"	3"	462	397.5	405.5	306.5	302.5	189

Hydraulic Performance Curves



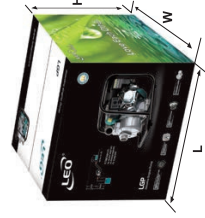
Materials Table

No.	Part	Material
1	Frame	Steel
2	Gasoline engine	
3	Pump cover	ADC12
4	O-ring	NBR
5	Mechanical seal	Carbon/Ceramic
6	Impeller	Cast Iron
7	Diffuser	Cast Iron
8	O-ring	NBR
9	Pump body	Aluminum
10	Gasket	NBR
11	Outlet	Aluminum
12	Filling plug	PAG
13	Non-return valve	NBR
14	Inlet	Aluminum



Package Information

Model	GW (Kgs)	L (mm)	W (mm)	H (mm)	Quantity (PCS/20 TEU)
LGP20-A	21.5	470	412	432	340
LGP30-A	23	470	412	432	340





Application

- To transfer clean water with liquid temperature between 0°C and 40°C
- Applicable in water supply and drainage for factories, mines, municipal facilities as well as field irrigation, etc.

Features

- New unique design with ergonomic feature
- Portable and compact pump frame
- High quality motor with excellent performance and long service life
- Impeller designed with high efficient hydraulic system
- Low fuel consumption

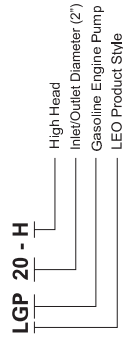
Pump

- Anti-rust cast iron diffuser
- Max. suction: 6 m/120 s
- Inlet/outlet: 50 mm/2 x 38 mm+1 x 50 mm

Engine

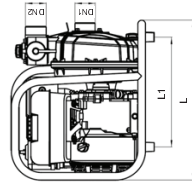
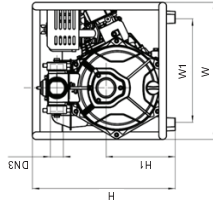
- Single cylinder 4-stroke, Air-cooled
- Max. power: 6.5 HP
- Displacement: 196 cc
- Rated speed: 3600 rpm

Identification Codes



Technical Data

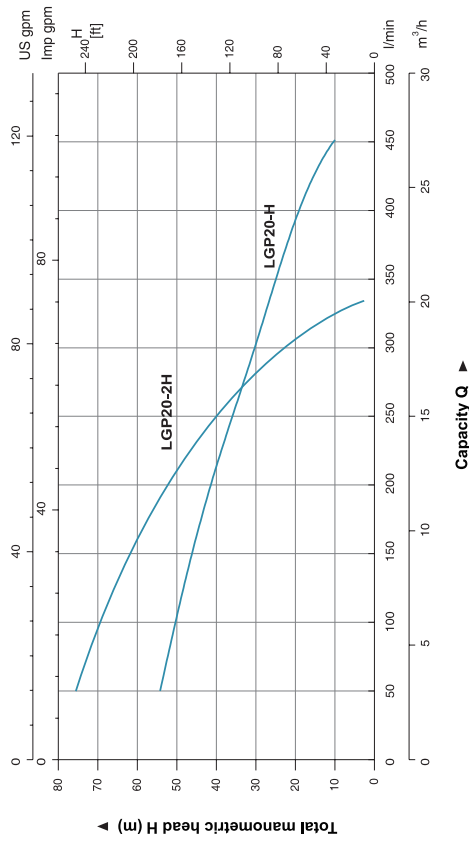
MODEL	POWER HP	Q (m ³ /h)	Q (l/min)	5	10	15	20	25	30
LGP20-H	6.5	83.3	666.7	250	333.3	416.7	500		
LGP20-2H	6.5	55	44.3	36	27	17	2.5		
		H (m)	80	63	42	5			



Dimension

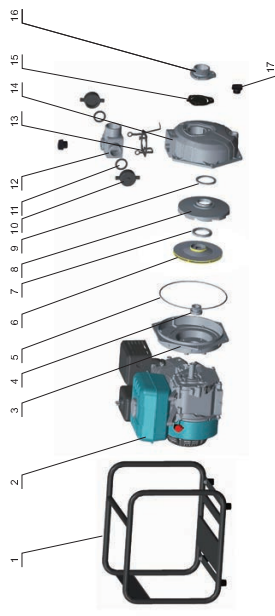
Model	DN1	DN2	2xDN3	L	W	H	L1	W1	H1
LGP20-H	2"	2"	1.5"	463	387	412	318	300	200
LGP20-2H	2"	2"	1.5"	463	387	412	318	300	200

Hydraulic Performance Curves



Materials Table

No.	Part	Material
1	Frame	Sheet
2	Engine	Aluminum
3	Bracket	Aluminum
4	Mechanical seal	Carbon/Ceramic
5	O-ring	NBR
6	Impeller	Aluminum
7	Seal ring	NBR
8	Diffuser	HT200
9	Seal ring	NBR
10	Pipe blanking cap	PP
11	Seal ring	NBR
12	Outlet	Aluminum
13	Gasket	NBR
14	Pump body	Aluminum
15	Non-return valve	NBR
16	Inlet	Aluminum
17	Filling plug	PA6



Package Information

Model	GW (Kgs)	L (mm)	W (mm)	H (mm)	Quantity (PCS/20 TEU)
LGP20-H	22.22	470	412	432	340
LGP20-2H	22.24	470	412	432	340

